

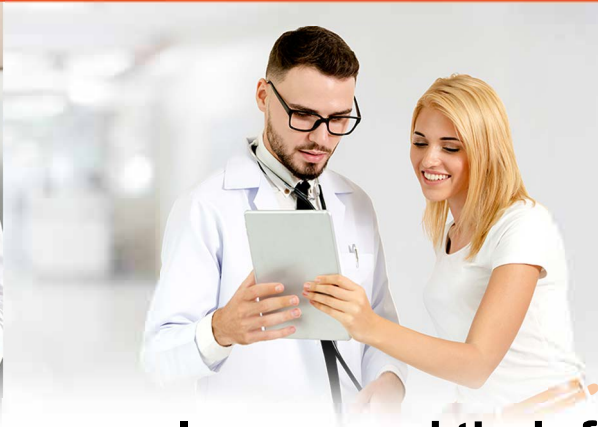
Exectras

PAYMENTS + MEMBERSHIP

**Employee Benefits Made
Easy — and Affordable.**



TRIDENT
MERCHANT SOLUTIONS



**Give your employees and their families
World Class benefits for only **\$17/month/employee***
or **FREE** when you use Exectras for payments!****

*Average Cost. Actual Cost Based on number of employees **Terms and conditions apply



Your membership includes
Exectras 360HEALTH
Wellness That Works For Your Workforce

- | | |
|--|---|
| 24/7/365 Virtual Primary Care | Free urgent care + low to no cost primary + behavioral health |
| \$10k Free Life Insurance | For every employee. Guaranteed issuance - no medical exams required |
| Accident & Critical Care Coverage | Extra protection for serious illness or injury (<i>Only \$6.26/employee*</i>) |
| Prescription Savings | Up to 88% off prescriptions at over 70,000 pharmacies nationwide |
| Wellness & Financial Tools | Help employees stay physically and financially healthy |
| Peer Support Access | 24/7/365 support through the Kindly Human platform |

*Monthly Cost. May vary per state

Employee Benefits

- On-Demand Wage pay with Debit Card
- Home & Auto Insurance Programs
- ID Theft Resolution - No Cost to the employee
- Exclusive Discounts on auto, travel, electronics, and more...

Best-in-class Access / Fortune 500 Discounted Business Services

- Workers Compensation
- Business Insurance & Risk Services
- Payroll, HR & PEO Options
- Same Day Business Loans & Working Capital
- Affordable Group Health Insurance

Award winning platforms to help employees stay physically & financially healthy.

Optional Upgrade: 360HEALTH+ Even Lower copays and enhanced coverage for a few extra dollars more per employee!



Support the physical and mental well-being of your employees and their families with 24/7/365 access to over 55,000 participating physicians nationwide.

Urgent & Primary Care

- Access licensed doctors for non-emergency medical needs like colds, infections, allergies, rashes, minor injuries, and more.

Behavioral Health Counseling

- Connect with licensed therapists, psychologists, and psychiatrists for support with anxiety, depression, family challenges, grief, and more.

Peer-to-Peer Emotional Support

- Anonymous, on-demand conversations with trained listeners perfect for those times when you just need someone to talk to.

Urgent Care & Peer-to-Peer Support is always free.

Membership Type

Total Number of Employees	360HEALTH Monthly Fee	360HEALTH Upgrade Monthly Fee**
1-5 Employees	\$150.00	\$25.00
6-10 Employees	\$250.00	\$50.00
11-15 Employees	\$350.00	\$75.00
16-25 Employees	\$450.00	\$125.00
26-35 Employees	\$550.00	\$175.00
36-50 Employees	\$650.00	\$225.00
50+ Employees	\$13.00/Employee	\$4.50/Employee

**Terms & Conditions apply.*

***The Exectras 360Health+ Upgrade unlocks full access to Exectras VPC services — including Urgent Care, Primary Care, and Behavioral Health — with 360Health+, you also get \$0 Primary Care visits and \$25 therapy sessions compared to \$15 and \$65 per visit with standard 360Health.*